

State of Wyoming Corner Record

(In compliance with the CORNER PERPETUATION AND FILING ACT, Wyoming Statutes, 1907 Section 33-29-140 et. seq., and the Rules and Regulations of the Board of Professional Engineers and Professional Land Surveyors)

Reverse side of this form may be used if more space is needed.

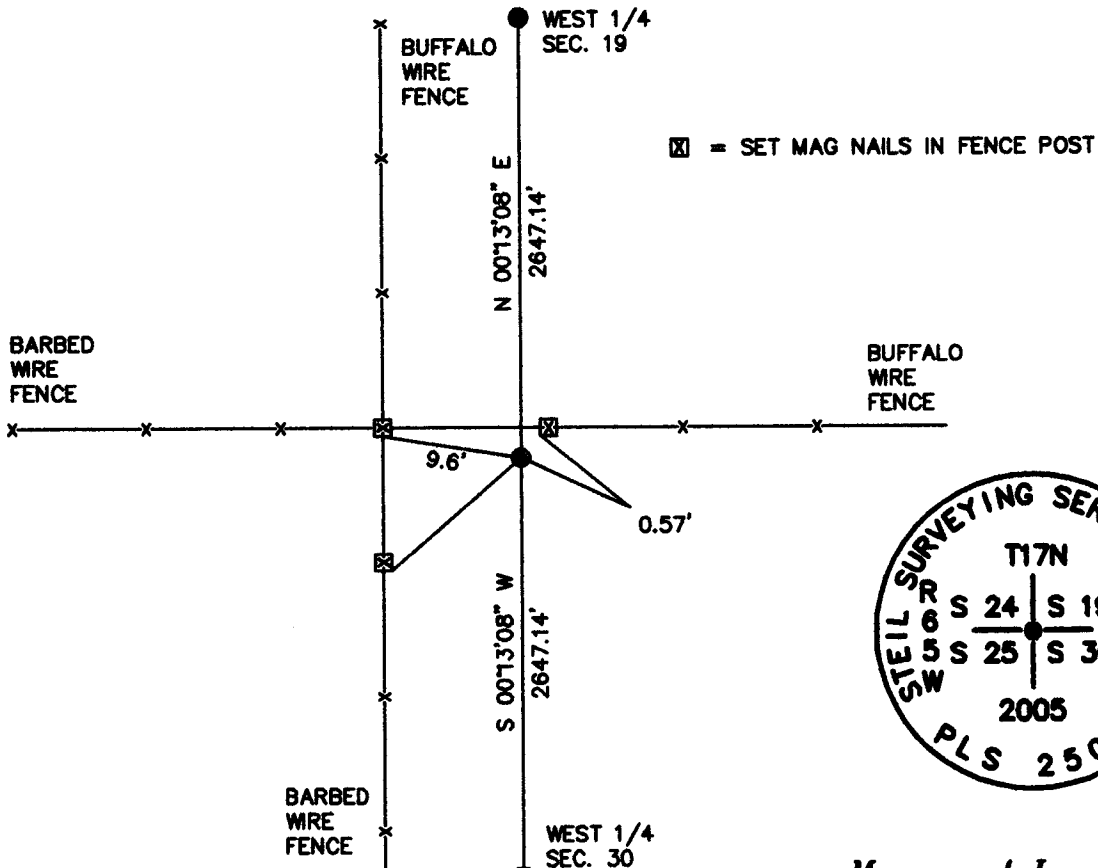
Record of original survey and citation of source of historical information (if corner is lost or obliterated). Description of corner monumentation evidence found and/or monument and accessories established to perpetuate the location of this corner. Sketch of relative location of monument, accessories, and reference points with course and distance to adjacent corner(s) (if determined in this survey). Method and rationale for reestablishment of lost or obliterated corner.

RECORD: LIMESTONE 15" X 12" X 4" FOR CORNER TO SECTIONS 19 & 30, 24 & 25 IN TOWNSHIP 17N IN RANGES 64 & 65W.

MONUMENT FOUND: FOUND NOTHING.

MONUMENT SET: SET A 5/8" X 24" REBAR WITH A 3 1/4" ALUMINUM CAP PROJECTING 0.2' ABOVE GROUND SURFACE WITH THE CAP STAMPED AS SHOWN BELOW. MONUMENT WAS SET BY PROPORTIONING ON RANGE LINE BETWEEN THE WEST 1/4 OF SEC. 30 AND THE WEST 1/4 OF SEC. 18 T17N R64W.

REFERENCES: MONUMENT LIES 10' EAST OF A N-S-E-W FENCE CORNER AND IN LINE WITH A E-W BUFFALO FENCE. SET MAG NAILS FOR REFERENCE.



Date of Field Work: 11/02/05

Office Reference: 06183

Monument Inscription

Cross Index Plat

	1	2	3	4	5	6	7	8	9	10	11	12	13	14	15	16	17	18	19	20	21	22	23	24	25		
A																											A
B																											B
C		6			5				4					3					2						1	C	
D																											D
E																											E
F																											F
G																											G
H																											H
I																											I
J																											J
K																											K
L																											L
M																											M
N																											N
O																											O
P																											P
Q																											Q
R																											R
S																											S
T																											T
U																											U
V																											V
W																											W
X																											X
Y																											Y
Z																											Z
	1	2	3	4	5	6	7	8	9	10	11	12	13	14	15	16	17	18	19	20	21	22	23	24	25		

Firm/Agency, Address

STEEL SURVEYING SERVICES LLC
1102 WEST 19th STREET
CHEYENNE WY 82001

Telephone Number: **(307) 634-7273**

This corner record was prepared by me or under my direction and supervision.

SEAL & SIGNATURE



Corner Name SW Corner Section 19, T 17 N, R 64 W, 6th P.M.

Cross-Index No.: R-1

County: LARAMIE Wyoming

SBRPEPLS/PLSW: March 1904; PLSW January 1998

RECORDED 10/05/2010 AT 1:53 PM REC# 554408 BK# 2186 PG# 489
 DEBRA K. LATHROP, CLERK OF LARAMIE COUNTY, WY PAGE 1 OF 1